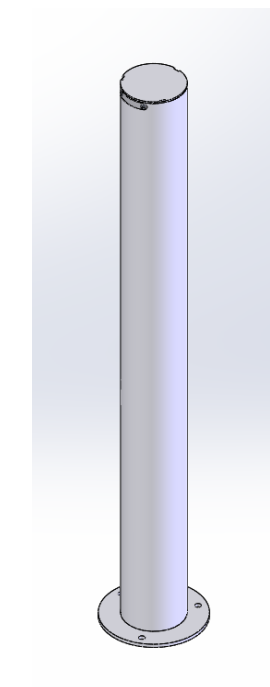


To fix QUICK bollard for ingrounding, the following tools are required:

1. jackhammer or drill with cup in concrete
2. chemical quick-setting cement

- 1) Find the area of installation. Check that there are no sub-services.
- 2) Core drilling a hole with a diameter of ~ 80 mm, depth 250 mm min.
- 3) Place the rack making sure that the base is horizontal
- 4) Proceed fixing with mortar / concrete chemical.



To fix QUICK bollard with base plate, the following tools are required:

1. power drill with $\varnothing 8$ mm bit
2. no. 3 mechanical or chemical anchors M8 and washers

- 1) Make sure that the ground is level and solid enough (concrete, asphalt, stone or porphyry are all suitable materials).
- 2) Drill in the ground four holes concentric with the pre-drilled holes in the baseplate.
- 3) Fix the baseplate with nr. 3 mechanical or chemical anchors and washers.